



Safe Return to School

Conditions essential to the implementation of the plan for reopening schools


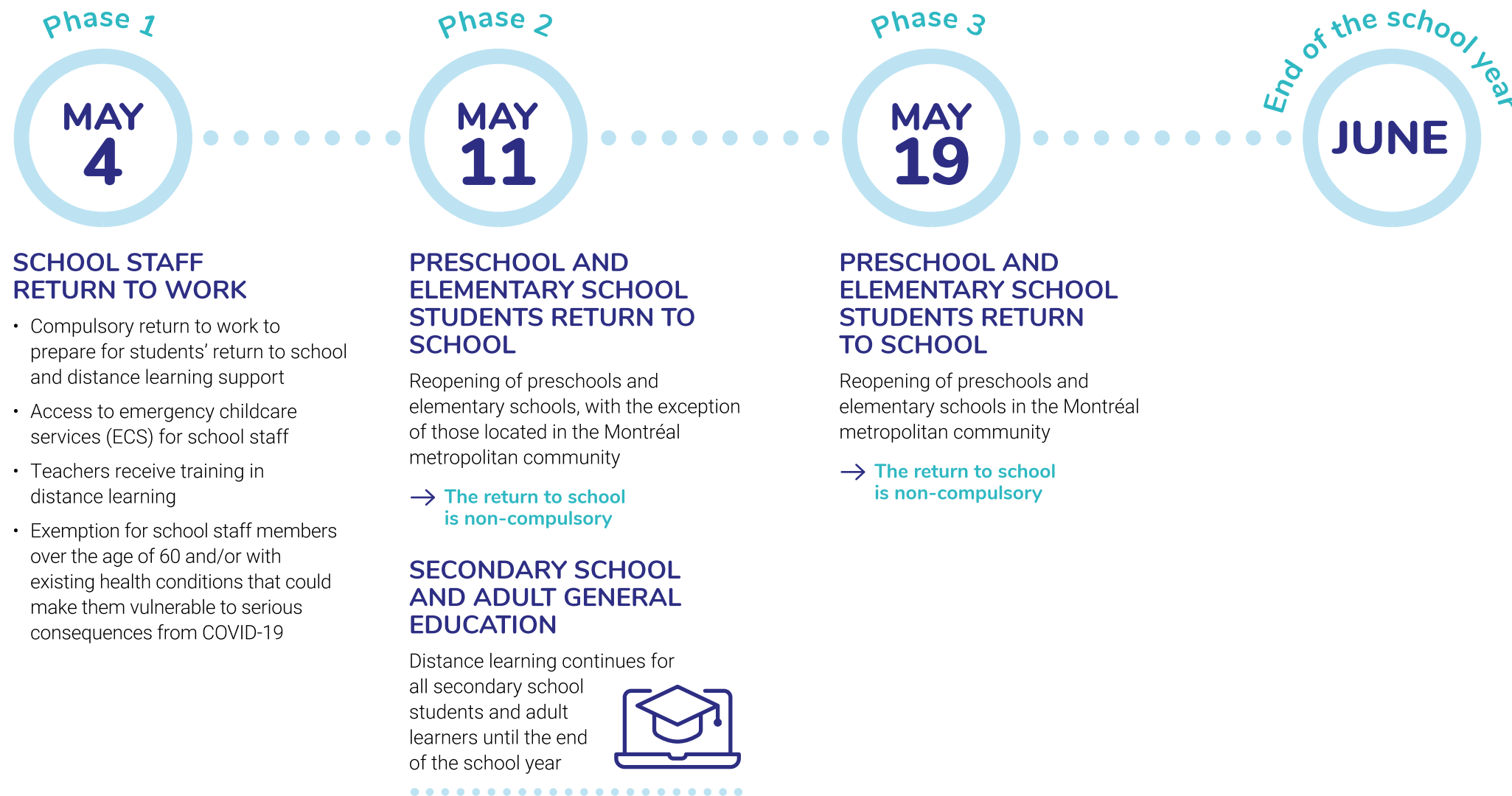
- Optimum access to COVID-19 testing for people exhibiting symptoms
- Limited exposure for people vulnerable to the virus
- Stable or diminishing number of new cases
- Maintenance of the R0 indicator (virus propagation indicator) at level 1 or below

Measures to be implemented in schools

- Return to school is non-compulsory
- Compliance with the 2-metre social distancing rule
- Maximum of 15 students per classroom
- Staggered schedules to limit movement within the school and to limit the number of instances when students move at the same time (for example, students will take turns using the schoolyard)
- Regular maintenance to ensure that premises are clean and sanitary
- Awareness of hygiene and handwashing etiquette
- Frequent and compulsory handwashing for all
- Reorganization of school transportation to ensure that one out of every two school bus seats is empty and that there is no more than one student per occupied seat
- Creation of a protection zone for school bus drivers
- An emergency kit ready for use if needed (gloves, medical procedure masks, smock, disinfecting solution)
- All persons (students and school staff) presenting COVID-19 symptoms prohibited from entering the school for a 14-day period
- All persons (students and school staff) with a health condition that could make them vulnerable to the effects of COVID-19 (e.g. chronic disease, severe immunodeficiency, pregnancy or breastfeeding, aged 60 and older) advised to refrain from going back to school before September 2020
- Non-essential common areas in schools closed and access to schools restricted to staff and students

RETURN TO SCHOOL

PLAN APPROVED BY THE DIRECTION GÉNÉRALE DE LA SANTÉ PUBLIQUE



Additional pedagogical support offered to elementary and secondary school students, particularly those pursuing distance learning

→ **Improved pedagogical support**

→ **Digital materials and Internet access provided to students in need**

KEY INGREDIENTS FOR A RETURN TO SCHOOL THAT IS...



...COORDINATED

- Implementing provincial working groups to prepare for the reopening of schools:
 - MEES, teachers, non-teaching professionals, support staff, principals, directors general of the school boards, parents
 - Each school team will prepare for the reopening of schools by working with their school board and local stakeholders



...SAFE

- Respecting the guidelines issued by the public health authorities



...WELCOMING

- Informing and reassuring parents
- Giving students a warm welcome and providing support as they return to class



...PRAGMATIC

- Planning the essential learning to be acquired before the end of the school year
- Consolidating learning

ACTIONS TO BE CARRIED OUT

SCHOOL ORGANIZATION

Parents' intentions

- Schools will contact the parents to find out if they intend to send their children back to school
- Schools need to be apprised of the parents' intentions a week before schools reopen
- Classes will be set up, classrooms organized, the required staff assigned, etc.

Pick-up of students' materials

- Starting April 27, school teams can begin preparing for the pick-up of students' materials and gradually notify parents of the procedures involved, according to a protocol established by the public health authorities

SAFETY OF STUDENTS AND SCHOOL STAFF

Social distancing

- Compliance with the social distancing rule of 2 metres between individuals
- Maximum of 15 students per classroom
- Organization of classrooms to ensure this is respected
- Recourse to larger rooms if necessary (other facilities)
- Isolation of groups from each other
- Staggered schedules to limit movement within the school and to limit the number of instances when students move at the same time (for example, students will take turns using the schoolyard)
- No visitors allowed in schools

Hygiene measures

- Regular maintenance to ensure that the premises are clean
- Steps taken to raise awareness of proper handwashing and respiratory hygiene
- Frequent, compulsory handwashing for all

SPECIAL ADJUSTMENTS

Vulnerable students

- Parents will be encouraged to send vulnerable students back to school so that they can benefit from the best pedagogical support
- Pedagogical and professional support will be offered to students who continue their distance learning (for example, by sending parents weekly work plans)

Vocational training students

- Special procedures will be implemented to enable students to pursue their studies

Health problems

- Until further notice, school attendance is not recommended for students who have pre-existing health conditions

INCREASED PEDAGOGICAL SUPPORT FOR DISTANCE LEARNING

- Pedagogical and professional support will be offered to students to help them pursue their distance learning (for example, they will receive a weekly work plan)
- LEARN support will continue to be provided along with the educational resources available through Télé-Québec and the [Open School platform](#)
- Free access to the digital versions of instructional materials
- Schools will be able to loan equipment, if necessary

SCHOOL TRANSPORTATION

- Every other school bus seat will be kept empty and only one child will be permitted on each of the remaining seats. A protection zone will also be created for the driver
- Parents will be asked to drive their children to school

SCHOOL CHILDCARE SERVICES

- Emergency childcare services, which are reserved for the children of people working in healthcare, social services and essential services, will remain open until May 8, inclusive (until May 15, inclusive, for the Montréal metropolitan community, circumstances permitting). School staff will also be entitled to emergency childcare services
- Beginning on May 11, emergency childcare services will be replaced by regular childcare services in all the schools that will be open at that time, in all regions (except for the territory of the Montréal metropolitan community). Parents whose children were attending school on March 13, 2020, will be entitled to these services
- During the week of May 11, emergency childcare services will continue to operate in the Montréal metropolitan community
- Regular childcare services will then reopen on May 19 for children in the Montréal metropolitan community and were attending them on March 13, 2020

SCHOOL MANAGEMENT

- The various advisory and decision-making bodies (governing boards, teachers' participation boards, staff in meetings) will resume their activities mainly through distance participation technologies, such as videoconferencing, the TEAMS platform, etc.
- Activities required to bring the school year to an end will resume (consolidation of learning, student placement for 2020-2021, closing of budgets, etc.)
- Planning activities for the next school year will resume (registration, course selection, class schedules, staffing plans, task development, orders for instructional materials, review of the previous year and closing of any gaps in student learning)

